

DOUBLE J FARMS

51st Annual Bull & Female Sale



Selling Pick
OF THE OPEN HEIFERS!

85 Blacks, Black Baldies, Reds, Red Baldies including 30 ET's straight from the heart of our program that has stood the test of time for 51 years!



Double J
Farms

FRIDAY, JANUARY 24, 2025 • 12:00 NOON • GARRETSON, SD

SELLING 82 SIMMENTAL, SIMANGUS & ANGUS LOTS!

Welcome to the Double J Farms 51ST ANNUAL PRODUCTION SALE!

As I sit in the house here writing this letter early in the morning, I look across the road to see a light snow falling while the cow herd grazes and lounges in the corn stalks. What a peaceful, tranquil time.

Speaking of time. "Time Changes All Things!" Which leads us to today's time. All the cattle on our place were recently DNA profiled parentage tested with enhanced EPDs to better serve not only us as producers but also you, our customers, to move everyone forward in a positive direction. To add, our entire black cow herd is homozygous black and everything on the place is homozygous polled and a tested non diluter, which is difficult to find in today's time. Back in 1974, I sold my first registered Simmental bulls in 2 hours with a small, classified ad and we have and will continue to take great pride that all cattle will carry our Double J guarantee where our service doesn't end on the day of the sale.

Embryo Transfer (ET), another timely cattle-changing clock that allows us to select donors that represent our very best with industry leading sires to carry on excellent cow families while concentrating on balanced genetic traits. With the extensive use of AI and utilizing our resident herd sires, we have been incorporating a shortened calving window since 2018 and sell the females that are not due within our selected calving time. Conformation, performance, longevity, fertility and docility take high priority to meet the standards of today's time. We prioritize the quality of our females which has allowed our registered Simmental cattle to stand the "Test of Time!"

Over the times, we owe a lot of thanks to everyone who has allowed us to be in this business for 51 years! We have built a lifetime into developing these genetics while establishing strong relationships with our customers through the past five decades.

So, stop by anytime to view the sale offering which includes a pick of the 2024 heifer calves. We look forward to seeing you in person or online through DV Auction for our 51st Annual Bull and Female Sale on Friday, January 24, 2025, at noon.

Thank you for your time,
Robert "Bob" Julson and family

Everybody who previews the cattle before sale day will be entered into a drawing for the Ambient Weather station. Buyers will be eligible to receive the Mineral X-Feeder, and all registered bidders will be entered to win a handmade bench!



Marketing Representatives:

Kipp Julson.....	605-351-9088
Justin Dikoff, DV Auction/Auctioneer	605-290-0635
Kelly Schmidt, Special Assignment	406-599-2395
Jim Scheel, Special Assignment	605-545-1521
Lindsey Wolles, Consultant/Phone Bids.....	605-496-2487
Joseph Kvigne, Consultant	605-670-1785
Zach Lutz, Phone Bids	605-695-2173
Phillip Eggers, Special Assignment	605-351-5438
Ken Odde, ASA Representative	605-848-4479

Watch & Bid Online:

Sale will be broadcasted live on DV Auction for those of you that want to participate online. Please register with DV Auction a couple days ahead of the sale. Contact Justin Dikoff with DV Auction at 605-290-0635 or myself at 605-351-9088 if you need help registering.



Directions to Sale Site: *Visitors Always Welcome!*

From I29 take Exit 94 east to 487th Avenue, then go south 2 miles and then west 1/4 mile
From I90 take Exit 410 north to Garretson, then go east 1 mile, then north 1 mile and then west 1/4 mile
Sale & Cattle Location: 48672 252nd St, Garretson, SD

Just 25 minutes NE of Sioux Falls!

Hotel Accommodations:

Holiday Inn Express & Suites 605-582-2901
 1103 N Splitrock Blvd, Brandon, SD 57005
Quality Inn..... 605-644-7236
 1105 N Splitrock Blvd, Brandon, SD 57005

Announcements:

Any announcements made on sale day take precedence over printed material in the catalog or other printed material associated with this sale. Anyone visiting the farm or attends this sale does so at their own risk and Double J Farms will not be held responsible for any personal injury.

Updates & Sale Order:

Additional information including the open heifer supplement sheet, videos and the sale order will be posted on our website at www.doublejsimmentals.com and www.dvauction.com. Any postponements will be posted on DV Auction, Double J Farms Facebook page, our website or you can contact a representative. Pictures were taken on 12/3/2024.

EPDs: 12/16/2024 EPDs are provided. Please note that EPDs may change from the time printed until the registration papers are transferred. Updated enhanced EPDs will be available on sale day.

Terms & First Breeding Season Guarantee: All cattle sell under the Suggested Terms and Conditions of their respected breed under the American Simmental Association or the American Angus Association and sell with a registration paper. The bulls selling will be guaranteed for their first breeding season. Seller will not be responsible for more than the purchase price should an issue arise. If a problem with your purchase occurs, contact Double J Farms immediately. All claims must be submitted by December 1, 2025, with the salvage value of \$2,000 on all bulls selling. Bulls were weaned in August alongside their dams with nose weaners. They were brought home to the lot and developed slowly and not over conditioned. As proven with our ADG and WDA, we do not believe in feeding a high corn ration for a short period of time to show a high ADG. Our ADG is from weaning date to yearling weight date to yearling date. Bulls will be wintered, semen evaluated, have a complete vaccination program, magnets and guaranteed with delivery available. The bred females are pregnancy checked with a Scour Guard 4KC shot and due to calve within the period printed.

Vets:

Sweet Grass Veterinary Service
 Erik Holum 605-928-8387
 Windy Ridge Vet Clinic
 Brett Kroeze (vet & embryologist)..... 507-825-3336

Insurance:

We take every precaution for the care and safety of your purchases. Insurance will be available on sale day. We encourage you to take out insurance on your purchases.
 Martin Trudeau Insurance.....1-877-920-0872
 Ray Trudeau..... 605-770-5170

Retained Semen Interest: Double J Farms retains 1/3 semen interest/revenue on any bull selling and in herd use semen. Any semen collection for herd use would be at our expense and the buyer's convenience.

Sale Day Phone: If you would like to bid by phone, please call a representative or myself with plenty of time ahead the sale to ensure we have your needs covered. We will guarantee our sight unseen selections for you.

Trucking:

We will deliver most of our bulls ourselves after they are semen tested in April. Truckers will be available to go anywhere needed at a minimum cost outside our free trucking area. We would appreciate pick up or delivery arrangements of the females to be made within a few days of the sale.

Catalog by Stockman Design Services, The Stockman

KIPP JULSON || Cell 605-351-9088 || Sale Day Landline 605-594-2310

Check out all sale videos online early in the New Year at www.DVAuction.com

Lot 1 KRJ M4144

Act BW: **ET** ASA#4406453 BD: 1/30/24 Tattoo: M4144
 Adj WW: **839 lbs.** *Homo Black Homo Polled Purebred SM Bull*
 Adj YW: **1347 lbs.**

ADG:	3.19
WDA:	3.79
Adj Scrotal:	39.4
Frame Score:	5.7
CE:	9
BW:	2.8
WW:	94
YW:	136
ADG:	0.26
MCE:	2
Milk:	12
MWW:	58
Stay:	15
DOC:	10.5
CW:	33.9
YG:	-0.62
Marb:	0.07
BF:	-0.103
REA:	1.44
API:	126
TI:	85



MR CCF 20-20 MR CCF VISION
 HTP SVF DEW THE STROKE
KRJ E774 BCLR CASH FLOW C820
 DOUBLE J MISS Z257

There is no better way to start off our 51st Annual Sale than with this attention-grabbing baldy! His dam, E774, was the high selling heifer at the 2017 North Dakota State Simmental Sale where we retained a flush, which resulted in this remarkable individual. E774 is the reason we acquired Cash Flow in 2018 as our herd sire who later that year was leased to Genex Beef. This herd sire prospect claimed the #1 WW spot weighing 839 pounds and carcass traits in the top 1% of the breed and we can't wait to incorporate this baldy in our breeding program! Come find this bull in Garretson and understand why he earned the coveted Lot 1 tag!



Lot 2 DJF M427

Act BW: **98 lbs.** ASA#4406340 BD: 2/9/24 Tattoo: M427
 Adj WW: **822 lbs.** *Homo Black Homo Polled Purebred SM Bull*
 Adj YW: **1565 lbs.**

ADG:	4.66
WDA:	4.37
Adj Scrotal:	39.5
Frame Score:	7.4
CE:	10
BW:	2.7
WW:	101
YW:	153
ADG:	0.33
MCE:	4
Milk:	23
MWW:	74
Stay:	16
DOC:	13.8
CW:	43.4
YG:	-0.34
Marb:	0.23
BF:	-0.063
REA:	1.02
API:	141
TI:	93



KRJ DAKOTA OUTLAW G974 RUBYS TURNPIKE 771E
 BRKC DAPHNE DY37
DJF E798 CCR GRAVITY 9064A
 DJF A362

KRJ Dakota Outlaw has made a substantial impact in not just our program, but for several cattlemen across the country. His progeny has consistently topped various bull sales across the Midwest with high customer satisfaction. This son could arguable be one of the best Outlaw calves that has been born. He has the extra look and power while not sacrificing an ounce of performance. Out of the natural calves, this bull set the pace and had the #1 WW ratio at 113 in addition to placing at the #1 spot for YW ratio at 114. As a result, he ranks in the top 2% for WW and top 3% for YW! This large-framed, big scrotal bull posted a 4.66 ADG and a 4.37 WDA from of a dam who has a 108 WW ratio herself. His maternal brother sold to Friske last year for \$12,500. We believe so much in this individual that we look forward to utilizing him in our AI sire lineup and encourage you to not miss out on this exciting herd sire prospect!



Lot 3 KRJ M479

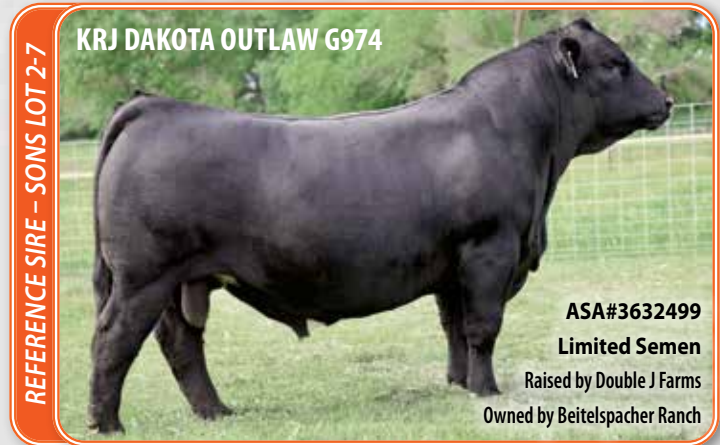
Act BW: **92 lbs.** ASA#4406390 BD: 2/15/24 Tattoo: M479
 Adj WW: **707 lbs.** *Homo Black Homo Polled Purebred SM Bull*
 Adj YW: **1349 lbs.**

ADG:	4.03
WDA:	3.73
Adj Scrotal:	37.3
Frame Score:	5.5
CE:	8
BW:	3.9
WW:	97
YW:	146
ADG:	0.30
MCE:	2
Milk:	19
MWW:	67
Stay:	11
DOC:	10.0
CW:	33.7
YG:	-0.46
Marb:	-0.07
BF:	-0.098
REA:	0.99
API:	111
TI:	82



KRJ DAKOTA OUTLAW G974 RUBYSTURNPIKE 771E
 BRKC DAPHNE DY37
KRJ H020 LCDR WITNESS 541C
 KRJ D610

A lineage backed by a powerful group of donors who include Daphne as well as the U828 Goldmine donor who is most known as the dam of the great X011 donor cow. Be sure to find this good-looking bull on sale day!




REFERENCE SIRE - SONS LOT 2-7

KRJ DAKOTA OUTLAW G974

ASA#3632499
Limited Semen

Raised by Double J Farms
 Owned by Beitelspacher Ranch


Lot 4 KRJ M484

Act BW: 102 lbs. ASA#4406395 BD: 2/16/24 Tattoo: M484 
 Adj WW: 723 lbs. *Homo Black Homo Polled 3/4 SM 1/4 AN Bull*
 Adj YW: 1355 lbs.
 ADG: 3.97 **KRJ DAKOTA OUTLAW G974** RUBYS TURNPIKE 771E
 WDA: 3.86 BRKC DAPHNE DY37
 Adj Scrotal: 36.9 **KRJ E727** TNT TANKER U263
 Frame Score: 6.0 DOUBLE J MISS Y1106

The Brilliance females have worked well for us with his strong maternal data and design earning him the reputation of being a cow maker. This 3/4 Simmental has the similar style injected by his maternal granddam along with solid growth and carcass EPDs.

CE: 7	DOC: 14.4
BW: 3.5	CW: 37.4
WW: 88	YG: -0.38
YW: 135	Marb: 0.02
ADG: 0.29	BF: -0.069
MCE: 3	REA: 1.00
Milk: 22	API: 104
MWW: 66	TI: 75
Stay: 14	

Lot 5 KRJ M480

Act BW: 87 lbs. ASA#4406391 BD: 2/16/24 Tattoo: M480 
 Adj WW: 710 lbs. *Homo Black Homo Polled 3/4 SM 1/4 AN Bull*
 Adj YW: 1363 lbs.
 ADG: 4.10 **KRJ DAKOTA OUTLAW G974** RUBYS TURNPIKE 771E
 WDA: 3.84 BRKC DAPHNE DY37
 Adj Scrotal: 38.9 **KRJ E713** TNT TANKER U263
 Frame Score: 6.5 DOUBLE J MISS Y111

Out of a Tanker back to a Dual Focus female that has maintained her eye appeal, fleshing ability and maternal look extremely well. This larger-framed bull came in with a 4.1 ADG and two past full brothers are working for Ron Gilliland and Cole Farms.

CE: 15	DOC: 9.9
BW: 1.6	CW: 36.7
WW: 96	YG: -0.50
YW: 156	Marb: -0.01
ADG: 0.37	BF: -0.087
MCE: 8	REA: 1.22
Milk: 22	API: 127
MWW: 70	TI: 83
Stay: 17	



Lot 6 KRJ M487

Act BW: 104 lbs. ASA#4406398 BD: 2/17/24 Tattoo: M487 
 Adj WW: 730 lbs. *Homo Black Homo Polled Purebred SM Bull*
 Adj YW: 1291 lbs.
 ADG: 3.52 **KRJ DAKOTA OUTLAW G974** RUBYS TURNPIKE 771E
 WDA: 3.67 BRKC DAPHNE DY37
 Adj Scrotal: 37.9 **KRJ E7106** J BAR J NIGHTRIDE 225Z
 Frame Score: 7.0 KRJ C553

The Outlaw offspring gained the reputation to produce calves that cattlemen are after with their ability to maintain their rib shape and muscling while handling stress without shrinking when hauled to the sale barn. This large-framed bull goes back to our National Champion Purebred Cow/Calf Pair, Latisha.

CE: 10	DOC: 12.1
BW: 1.9	CW: 24.4
WW: 89	YG: -0.48
YW: 136	Marb: 0.30
ADG: 0.29	BF: -0.088
MCE: 3	REA: 1.00
Milk: 20	API: 141
MWW: 65	TI: 89
Stay: 15	


Lot 7 DJF M4104

Act BW: 98 lbs. ASA#4406415 BD: 2/26/24 Tattoo: M4104 
 Adj WW: 709 lbs. *Homo Black Homo Polled Purebred SM Bull*
 Adj YW: 1379 lbs.
 ADG: 4.21 **KRJ DAKOTA OUTLAW G974** RUBYS TURNPIKE 771E
 WDA: 3.89 BRKC DAPHNE DY37
 Adj Scrotal: 36.9 **DJF G9106** CCR COWBOY CUT 5048Z
 Frame Score: 6.4 DJF D664

His Cowboy Cut dam posted a 105 WW ratio on four calves. This bull gained 4.21 from his weaning weight to yearling weight and has a 3.89 weight per day of age!

CE: 9	DOC: 10.8
BW: 3.2	CW: 23.6
WW: 88	YG: -0.49
YW: 125	Marb: 0.27
ADG: 0.23	BF: -0.095
MCE: 2	REA: 0.95
Milk: 22	API: 138
MWW: 66	TI: 86
Stay: 17	


Lot 8 KRJ M476

Act BW: 96 lbs. ASA#4406387 BD: 2/15/24 Tattoo: M476 
 Adj WW: 714 lbs. *Homo Black Homo Polled Purebred SM Bull*
 Adj YW: 1429 lbs.
 ADG: 4.50 **KRJ JESSE JAMES J1154** RUBYS TURNPIKE 771E
 WDA: 3.95 BRKC DAPHNE DY37
 Adj Scrotal: 37.8 **KRJ H0113** BCLR CASH FLOW C820
 Frame Score: 6.0 KRJ E727

A full brother to Outlaw, Jesse James, is proving himself more and we are very excited for his next set of calves to hit the ground. This Jesse James son places in the top 4% of YW EPD with an adjusted weight at 1429 pounds and had a 4.5 ADG! His maternal brother was our high selling bull last year.

CE: 11	DOC: 14.3
BW: 3.8	CW: 33.2
WW: 95	YG: -0.39
YW: 155	Marb: -0.10
ADG: 0.38	BF: -0.071
MCE: 5	REA: 0.97
Milk: 18	API: 120
MWW: 66	TI: 81
Stay: 15	

Lot 9 DJF M459

Act BW: 95 lbs. ASA#4406371 BD: 2/13/24 Tattoo: M459 
 Adj WW: 706 lbs. *Homo Black Homo Polled Purebred SM Bull*
 Adj YW: 1391 lbs.
 ADG: 4.29 **KRJ JESSE JAMES J1154** RUBYS TURNPIKE 771E
 WDA: 3.86 BRKC DAPHNE DY37
 Adj Scrotal: 36.2 **DJF G969** BBS TRUE JUSTICE B10
 Frame Score: 5.9 DOUBLE J MISS Y182

Although there are not many of them, these Jesse James brothers show the power of a good pedigree. This bull's maternal brother, Hawkeye, was the lead off bull that sold to Triple B Simmentals last year. His WW and YW are in the top 15% in addition to ranking in the top 10% for ADG which was 4.29!

CE: 11	DOC: 12.9
BW: 3.6	CW: 39.1
WW: 96	YG: -0.42
YW: 154	Marb: 0.02
ADG: 0.36	BF: -0.113
MCE: 6	REA: 0.81
Milk: 22	API: 122
MWW: 70	TI: 85
Stay: 12	



Lot 10 DJF M478

Act BW: 86 lbs.
Adj WW: 763 lbs.
Adj YW: 1480 lbs.

ADG: 4.51
WDA: 4.02
Adj Scrotal: 37.3
Frame Score: 6.0

CE:	11	DOC:	16.9
BW:	1.4	CW:	52.8
WW:	93	YG:	-0.19
YW:	150	Marb:	0.02
ADG:	0.35	BF:	-0.045
MCE:	7	REA:	0.80
Milk:	23	API:	134
MWW:	70	TI:	90
Stay:	17		

ASA#4406389 BD: 2/15/24 Tattoo: M478

Homo Black Homo Polled Purebred SM Bull

OMF/DK KRJ JAWBREAKER 15J MR SR MIC DROP G1534
OMF/DK CHEERS C88
DJF J1101 ES RIGHT TIME FA110-4
DJF E735

With his second set of calves on the ground, Jawbreaker is continuing to produce high quality individuals with a well-balanced EPD profile in an eye-catching package. This bull was always easy to find in the pasture this summer and came in with a 105 WW ratio and a 108 YW ratio in addition to having an ADG of 4.51!



Lot 11 DJF M4119

Act BW: 93 lbs.
Adj WW: 789 lbs.
Adj YW: 1495 lbs.

ADG: 4.45
WDA: 4.14
Adj Scrotal: 39.4
Frame Score: 6.1

CE:	9	DOC:	16.7
BW:	4.4	CW:	60.8
WW:	100	YG:	-0.44
YW:	161	Marb:	-0.02
ADG:	0.38	BF:	-0.109
MCE:	6	REA:	1.18
Milk:	25	API:	127
MWW:	75	TI:	85
Stay:	17		

ASA#4406430 BD: 3/7/24 Tattoo: M4119

Homo Black Homo Polled Purebred SM Bull

OMF/DK KRJ JAWBREAKER 15J MR SR MIC DROP G1534
OMF/DK CHEERS C88
DJF J167 ES RIGHT TIME FA110-4
DJF D6116

This second calf Right Time daughter has been doing a great job bringing in this bull with a 108 WW ratio and a 109 YW ratio in addition to great carcass traits. While sorting before picture day, this one greeted us at the gate, awaiting his catalog appearance!



Lot 12 DJF M497

Act BW: 105 lbs.
Adj WW: 735 lbs.
Adj YW: 1335 lbs.

ADG: 3.78
WDA: 3.68
Adj Scrotal: 37.2
Frame Score: 5.8

CE:	8	DOC:	16.8
BW:	5.9	CW:	52.0
WW:	107	YG:	-0.48
YW:	164	Marb:	0.00
ADG:	0.36	BF:	-0.121
MCE:	4	REA:	1.10
Milk:	23	API:	131
MWW:	76	TI:	87
Stay:	20		

ASA#4406408 BD: 2/22/24 Tattoo: M497

Homo Black Homo Polled Purebred SM Bull

OMF/DK KRJ JAWBREAKER 15J MR SR MIC DROP G1534
OMF/DK CHEERS C88
DJF J189 RBS BOISE B63
DJF F808

Baldy alert! This white-faced bull is out of a dam from the past resident herd sire, Boise, and was a top weaning weight heifer herself. He has 8 EPDs in the top 15% of the breed!

REFERENCE SIRE - SONS LOT 10-14

OMF/DK KRJ JAWBREAKER 15J

ASA#3893493
Semen \$30
Owned by Double J Farms

Lot 13 KRJ M4114

Act BW: 70 lbs.
Adj WW: 676 lbs.
Adj YW: 1213 lbs.

ADG: 3.39
WDA: 3.35
Adj Scrotal: 38.7
Frame Score: 4.8

CE:	15	DOC:	14.4
BW:	-3.7	CW:	24.6
WW:	64	YG:	-0.51
YW:	93	Marb:	-0.08
ADG:	0.18	BF:	-0.096
MCE:	9	REA:	1.05
Milk:	23	API:	128
MWW:	55	TI:	72
Stay:	16		

ASA#4406425 BD: 3/3/24 Tattoo: M4114

Homo Black Homo Polled Purebred SM Bull

OMF/DK KRJ JAWBREAKER 15J MR SR MIC DROP G1534
OMF/DK CHEERS C88
KRJ J139 RBS BOISE B63
KRJ F8112

This Jawbreaker offers a little more calving ease with a better CE and BW EPD to be a potential heifer bull if used with caution.

Lot 14 DJF M4112

Act BW: 95 lbs.
Adj WW: 680 lbs.
Adj YW: 1385 lbs.

ADG: 4.44
WDA: 3.82
Adj Scrotal: 36.2
Frame Score: 5.7

CE:	10	DOC:	16.0
BW:	3.9	CW:	53.2
WW:	99	YG:	-0.59
YW:	156	Marb:	-0.23
ADG:	0.36	BF:	-0.145
MCE:	5	REA:	1.27
Milk:	20	API:	115
MWW:	69	TI:	80
Stay:	16		

ASA#4406423 BD: 3/2/24 Tattoo: M4112

Homo Black Homo Polled Purebred SM Bull

OMF/DK KRJ JAWBREAKER 15J MR SR MIC DROP G1534
OMF/DK CHEERS C88
DJF J1108 KRJ DAKOTA OUTLAW G974
DJF E736

This star headed Jawbreaker x Outlaw has 8 EPDs for growth and carcass in the top 15% in addition to a 4.44 ADG. Last year's maternal brother sold to Shallow Water Ranch in Texas.



Lot 15 KRJ M463

Act BW: 98 lbs. ASA#4406375 BD: 2/13/24 Tattoo: M463
 Adj WW: 798 lbs. *Homo Black Homo Polled Purebred SM Bull*
 Adj YW: 1513 lbs.
 ADG: 4.49
 WDA: 4.24
 Adj Scrotal: 41.7
 Frame Score: 6.7



LBRS GENESIS G69 WS PROCLAMATION E202
 LBR DIANA D69
KRJ F846 RBS BOISE B63
 KRJ ALL THAT B4133

The next 10 lots are sired by Genesis who ranks in the top 1% for WW, YW, CW, MARB and TI in addition to API in the top 3%. A truly consistent sire that offers the most unique combinations of growth, maternal and terminal traits. This larger-framed baldy shows just that with 8 EPDs in the top 25%, which include WW, CW and TI in the top 5%. His mother had a 109 WW ratio on five head and a 111 YW ratio on four bulls!

CE: 8 DOC: 14.1
 BW: 2.4 CW: 63.7
 WW: 101 YG: -0.22
 YW: 151 Marb: 0.53
 ADG: 0.31 BF: -0.031
 MCE: 3 REA: 1.14
 Milk: 24 API: 156
 MWW: 75 TI: 100
 Stay: 16



Lot 16 DJF M481

Act BW: 92 lbs. ASA#4406392 BD: 2/16/24 Tattoo: M481
 Adj WW: 730 lbs. *Homo Black Homo Polled Purebred SM Bull*
 Adj YW: 1345 lbs.



LBRS GENESIS G69 WS PROCLAMATION E202
 LBR DIANA D69
DJF F814 RBS BOISE B63
 DOUBLE J MISS Z285

More growth and carcass at its best with last year's maternal brother being well sought after along with his maternal sister being our top selling bred heifer in our 50th Anniversary sale!

ADG: 3.86
 WDA: 3.79
 Adj Scrotal: 39.4
 Frame Score: 6.0
 CE: 11 DOC: 14.6
 BW: 2.1 CW: 50.5
 WW: 92 YG: -0.21
 YW: 132 Marb: 0.48
 ADG: 0.25 BF: -0.042
 MCE: 5 REA: 0.87
 Milk: 23 API: 150
 MWW: 69 TI: 94
 Stay: 15



Lot 17 DJF M496

Act BW: 100 lbs. ASA#4406407 BD: 2/21/24 Tattoo: M496
 Adj WW: 754 lbs. *Homo Black Homo Polled Purebred SM Bull*
 Adj YW: 1468 lbs.



LBRS GENESIS G69 WS PROCLAMATION E202
 LBR DIANA D69
DJF F824 RBS BOISE B63
 DOUBLE J MISS Z285

Genesis continues to dominate in the field as the #1 Purebred sire for TI. This carcass driven bull posted a 4.48 ADG and a 4.13 WDA. His dam has had five calves with a 106 WW ratio and two bull calves with a 109 YW ratio! Last year's full brother was well accepted.

ADG: 4.48
 WDA: 4.13
 Adj Scrotal: 41.1
 Frame Score: 6.1
 CE: 7 DOC: 9.9
 BW: 3.2 CW: 57.2
 WW: 101 YG: -0.33
 YW: 143 Marb: 0.54
 ADG: 0.27 BF: -0.075
 MCE: 1 REA: 1.06
 Milk: 24 API: 154
 MWW: 74 TI: 99
 Stay: 17

Lot 18 KRJ M477

Act BW: 93 lbs. ASA#4406388 BD: 2/15/24 Tattoo: M477
 Adj WW: 735 lbs. *Homo Black Homo Polled Purebred SM Bull*
 Adj YW: 1431 lbs.



LBRS GENESIS G69 WS PROCLAMATION E202
 LBR DIANA D69
KRJ H0179 BCLR CASH FLOW C820
 DOUBLE J MISS U828

This Genesis goes back to our U828 donor cow family and his full brother that was acquired last year held up extremely well in Montana with their unforgiving weather conditions.

ADG: 4.38
 WDA: 3.95
 Adj Scrotal: 40.8
 Frame Score: 6.0
 CE: 9 DOC: 15.3
 BW: 2.8 CW: 55.4
 WW: 105 YG: -0.29
 YW: 161 Marb: 0.35
 ADG: 0.35 BF: -0.054
 MCE: 3 REA: 1.09
 Milk: 19 API: 142
 MWW: 71 TI: 98
 Stay: 13

Lot 19 DJF M493

Act BW: 96 lbs. ASA#4406404 BD: 2/19/24 Tattoo: M493
 Adj WW: 777 lbs. *Homo Black Homo Polled Purebred SM Bull*
 Adj YW: 1381 lbs.



LBRS GENESIS G69 WS PROCLAMATION E202
 LBR DIANA D69
DJF F896 RBS BOISE B63
 DJF C583

This bull's all purpose index is in the top 20% and terminal index ranks in the top 10% with his WW EPD in the top 4% of the breed! He also had a 107 WW ratio, and top cattlemen have found three of his maternal sibs in past sales.

ADG: 3.79
 WDA: 3.90
 Adj Scrotal: 43.0
 Frame Score: 6.3
 CE: 9 DOC: 17.0
 BW: 2.3 CW: 54.0
 WW: 94 YG: -0.33
 YW: 136 Marb: 0.34
 ADG: 0.26 BF: -0.054
 MCE: 4 REA: 1.18
 Milk: 26 API: 148
 MWW: 73 TI: 92
 Stay: 18

Lot 20 KRJ M420

Act BW: 83 lbs.	ASA#4406333	BD: 2/9/24	Tattoo: M420	
Adj WW: 732 lbs.	Homo Black Homo Polled Purebred SM Bull			
Adj YW: 1365 lbs.	LBRS GENESIS G69	WS PROCLAMATION E202		
ADG: 3.97		LBR DIANA D69		
WDA: 3.80	KRJ G968	KOCH BIG TIMBER 685D		
Adj Scrotal: 39.0		KRJ D680		
Frame Score: 5.9	<i>A Genesis son that has a little bit lighter birth weight but maintains the growth and carcass his sire is known for producing. This Genesis bull could be safer for smaller-framed or second calf females. A 3.8 WDA on this bull along with his three sisters, came in with a 106 WW ratio!</i>			

CE: 10	DOC: 11.4
BW: 0.7	CW: 64.8
WW: 100	YG: -0.30
YW: 148	Marb: 0.44
ADG: 0.30	BF: -0.060
MCE: 4	REA: 1.19
Milk: 25	API: 153
MWW: 75	TI: 100
Stay: 15	

Lot 21 DJF M460

Act BW: 84 lbs.	ASA#4406372	BD: 2/13/24	Tattoo: M460	
Adj WW: 640 lbs.	Homo Black Homo Polled Purebred SM Bull			
Adj YW: 1341 lbs.	LBRS GENESIS G69	WS PROCLAMATION E202		
ADG: 4.39		LBR DIANA D69		
WDA: 3.72	DJF E799	GLS INTEGRATE Z3		
Adj Scrotal: 39.7		DJF B447		
Frame Score: 5.9	<i>This maternal brother to Palisades did well considering he was a twin but really came on after weaning with a 4.39 ADG. He ranks at the top 1% for weaning, yearling and carcass weight EPDs along with terminal index in the top 5%! We are looking forward to the upcoming embryo calves from his donor dam this spring.</i>			

CE: 6	DOC: 15.1
BW: 4.1	CW: 61.6
WW: 101	YG: -0.37
YW: 160	Marb: 0.29
ADG: 0.37	BF: -0.077
MCE: 3	REA: 1.21
Milk: 21	API: 134
MWW: 72	TI: 93
Stay: 13	

Lot 22 KRJ M471

Act BW: 96 lbs.	ASA#4406382	BD: 2/14/24	Tattoo: M471	
Adj WW: 708 lbs.	Homo Black Homo Polled Purebred SM Bull			
Adj YW: 1359 lbs.	LBRS GENESIS G69	WS PROCLAMATION E202		
ADG: 4.08		LBR DIANA D69		
WDA: 3.82	KRJ F806	CCR SANTA FE 9349Z		
Adj Scrotal: 39.7		CMW ML GINGER 101D		
Frame Score: 6.0	<i>Two top end bulls both came from this cow family for the past two years. This one has WW, YW and TI in the top 10% as well as API ranking in the top 20% and a 4.08 average daily gain.</i>			

CE: 11	DOC: 12.1
BW: 0.7	CW: 31.9
WW: 87	YG: -0.13
YW: 122	Marb: 0.36
ADG: 0.22	BF: -0.017
MCE: 6	REA: 0.57
Milk: 21	API: 143
MWW: 65	TI: 89
Stay: 15	

Lot 23 DJF M491

Act BW: 91 lbs.	ASA#4406402	BD: 2/18/24	Tattoo: M491	
Adj WW: 698 lbs.	Homo Black Homo Polled Purebred SM Bull			
Adj YW: 1342 lbs.	LBRS GENESIS G69	WS PROCLAMATION E202		
ADG: 4.04		LBR DIANA D69		
WDA: 3.75	DJF G949	RBS BOISE B63		
Adj Scrotal: 40.5		DJF B447		
Frame Score: 6.5	<i>Here's a growth and terminal oriented prospect herd sire with TI in the top 10% of the breed in addition to producing in a 4.04 ADG. His maternal brothers sold to Debaugh and Fischbach Simmentals.</i>			

CE: 12	DOC: 13.7
BW: -0.1	CW: 41.2
WW: 94	YG: -0.32
YW: 137	Marb: 0.56
ADG: 0.27	BF: -0.067
MCE: 7	REA: 0.88
Milk: 21	API: 167
MWW: 68	TI: 100
Stay: 18	

Lot 24 DJF M499

Act BW: 98 lbs.	ASA#4406410	BD: 2/24/24	Tattoo: M499	
Adj WW: 615 lbs.	Homo Black Homo Polled Purebred SM Bull			
Adj YW: 1185 lbs.	LBRS GENESIS G69	WS PROCLAMATION E202		
ADG: 3.59		LBR DIANA D69		
WDA: 3.30	DJF H099	LCDR WITNESS 541C		
Adj Scrotal: 35.8		DJF D6118		
Frame Score: 5.9	<i>The last Genesis son who has a weaning weight EPD in the top 5%, yearling weight in the top 10% in addition to marbling and terminal index in the top 20%. Check out his full sister selling as Lot 80.</i>			

CE: 7	DOC: 11.3
BW: 4.3	CW: 47.1
WW: 95	YG: -0.34
YW: 132	Marb: 0.49
ADG: 0.23	BF: -0.080
MCE: 2	REA: 0.91
Milk: 15	API: 145
MWW: 62	TI: 92
Stay: 17	

- In Memory of Shelby & Brey -



#ShelbyStrong



#breysunday

Lot 25 DJF M428

Act BW: 88 lbs.	ASA#4406341	BD: 2/9/24	Tattoo: M428	
Adj WW: 718 lbs.	Homo Black Homo Polled Purebred SM Bull			
Adj YW: 1347 lbs.	TJ POWER PLAY 422H	HOOK'S EAGLE 6E		
ADG: 3.94		TJ 12D		
WDA: 3.77	DJF E756	CCR COWBOY CUT 5048Z		
Adj Scrotal: 38.0		DJF A370		
Frame Score: 5.6	<i>Power Play is the powerful and performance-oriented, standout Eagle son that is appreciated for his body mass and thickness from end to end. This bull's dam had a 106 WW ratio herself and had progeny sell to highly reputable cattlemen across the Midwest.</i>			

CE: 11	DOC: 12.8
BW: 0.9	CW: 30.0
WW: 89	YG: -0.52
YW: 133	Marb: 0.08
ADG: 0.27	BF: -0.105
MCE: 5	REA: 1.05
Milk: 23	API: 133
MWW: 67	TI: 85
Stay: 15	

REFERENCE SIRE - SONS LOT 25-28

TJ POWER PLAY 422H

ASA#3762939

Lot 26 DJF M440

Act BW: 80 lbs. ASA#4406352 BD: 2/11/24 Tattoo: M440
 Adj WW: 727 lbs. *Homo Black Homo Polled Purebred SM Bull*
 Adj YW: 1464 lbs.



ADG: 4.63 TJ POWER PLAY 422H HOOK'S EAGLE 6E
 WDA: 4.06 TJ 12D
 Adj Scrotal: 34.6 DJF G936 RBS BOISE B63
 Frame Score: 5.4 DJF D693

CE: 15 DOC: 13.7
 BW: -1.3 CW: 52.1
 WW: 87 YG: -0.32
 YW: 135 Marb: 0.37
 ADG: 0.30 BF: -0.072
 MCE: 8 REA: 0.99
 Milk: 27 API: 155
 MWW: 70 TI: 94
 Stay: 15

Distinguished pedigree consisting of Boise, Absolute and Eagle with his dam having a 105 WW ratio on four and a 106 YW ratio on three bulls! This Power Play has a solid 4.06 WDA and a 4.63 ADG that are both towards the top!

Lot 27 KRJ M489

Act BW: 102 lbs. ASA#4406400 BD: 2/17/24 Tattoo: M489
 Adj WW: 775 lbs. *Homo Black Homo Polled Purebred SM Bull*
 Adj YW: 1430 lbs.



ADG: 4.13 TJ POWER PLAY 422H HOOK'S EAGLE 6E
 WDA: 3.91 TJ 12D
 Adj Scrotal: 36.4 KRJ J1171 RUBYS TURNPIKE 771E
 Frame Score: 5.8 BRKC DAPHNE DY37

CE: 9 DOC: 13.7
 BW: 2.7 CW: 60.3
 WW: 98 YG: -0.42
 YW: 156 Marb: 0.08
 ADG: 0.36 BF: -0.093
 MCE: 2 REA: 1.25
 Milk: 22 API: 122
 MWW: 71 TI: 88
 Stay: 11

This herd sire prospect posted a 106 WW ratio and a 105 YW ratio in addition to a 4.13 ADG and a 3.91 WDA. This growth-oriented bull comes from a second calf heifer who is a full sister to Outlaw and is doing a superb job!

Lot 28 KRJ M447

Act BW: 96 lbs. ASA#4406359 BD: 2/12/24 Tattoo: M447
 Adj WW: 669 lbs. *Homo Black Homo Polled 3/4 SM 1/4 AN Bull*
 Adj YW: 1286 lbs.



ADG: 3.88 TJ POWER PLAY 422H HOOK'S EAGLE 6E
 WDA: 3.62 TJ 12D
 Adj Scrotal: 35.6 KRJ F881 TJ MAKERS MARK 215Y
 Frame Score: 5.4 DOUBLE J MISS Z228

CE: 11 DOC: 14.0
 BW: -1.2 CW: 32.9
 WW: 68 YG: -0.10
 YW: 104 Marb: 0.34
 ADG: 0.23 BF: -0.018
 MCE: 5 REA: 0.49
 Milk: 19 API: 134
 MWW: 53 TI: 75
 Stay: 18

This baldy's granddam, Z228, sold through this very sale and is still going strong at 15 years old and recently produced a top selling Outlaw bull for Lone Oak Beef. We moved this bull's mother into the donor pen after producing the Lot 1 bull last year and have high hopes for her to follow in her mother's footsteps.



Lot 29 KRJ M4135

Act BW: ET ASA#4406444 BD: 1/25/24 Tattoo: M4135
 Adj WW: 751 lbs. *Homo Black Homo Polled Purebred SM Bull*
 Adj YW: 1272 lbs.



ADG: 3.28 RFS HEYDAY H48 LCDR IMPACT 134F
 WDA: 3.56 E42
 Adj Scrotal: 37.2 DOUBLE J MISS X011 ELLINGSON LEGACY M229
 Frame Score: 6.4 DOUBLE J MISS U828

CE: 7 DOC: 16.1
 BW: 3.1 CW: 55.7
 WW: 107 YG: -0.52
 YW: 162 Marb: -0.17
 ADG: 0.35 BF: -0.111
 MCE: 4 REA: 1.34
 Milk: 22 API: 109
 MWW: 76 TI: 87
 Stay: 11

Heyday is one of my favorite sires to use and unfortunately, we were very heifer heavy this year and this is the only bull we have to offer. Last year the five Heydays averaged \$12,000 and three X011 sons averaged \$9,666! X011 has become one of the most prolific donors recognized by the ASA and was purchased by the Kenner Simmental Ranch. Weaning, yearling and carcass traits at the top for this potential herd sire!



Lot 30 KRJ M4130

Act BW: ET ASA#4406439 BD: 1/17/24 Tattoo: M4130
 Adj WW: 689 lbs. *Black Homo Polled Purebred SM Bull*
 Adj YW: 1332 lbs.



ADG: 4.03 HOOK'S BROADWAY 11B MCM TOP GRADE 018X
 WDA: 3.63 HOOK'S WATER LILY 89W
 Adj Scrotal: 36.2 EKHC RED JEWEL 760 SVF/NJC BUILT RIGHT N48
 Frame Score: 5.5 EKHC CROWN JEWEL 523

CE: 4 DOC: 8.3
 BW: 3.8 CW: 26.4
 WW: 75 YG: -0.36
 YW: 120 Marb: 0.21
 ADG: 0.28 BF: -0.072
 MCE: 3 REA: 0.77
 Milk: 24 API: 119
 MWW: 61 TI: 75
 Stay: 15

High quality individual with exceptional eye appeal, rib shape and impeccable foot and leg structure. His dam, Red Jewel, has had over 300 progenies throughout the years. Plus, he had a 4.03 average daily gain! He is the ONLY heterozygous black bull in the sale offering.

Lot 31 KRJ M468

Act BW: 98 lbs.
Adj WW: 786 lbs.
Adj YW: 1529 lbs.

ADG: 4.66
WDA: 4.21
Adj Scrotal: 40.7
Frame Score: 7.0

CE: 12 DOC: 15.8
BW: 3.6 CW: 43.0
WW: 99 YG: -0.38
YW: 156 Marb: 0.14
ADG: 0.35 BF: -0.078
MCE: 7 REA: 1.00
Milk: 25 API: 145
MWW: 74 TI: 90
Stay: 19

ASA#4406380 BD: 2/14/24 Tattoo: M468

Homo Black Homo Polled Purebred SM Bull

CCR COWBOY CUT 5048Z TRIPLE C SINGLETARY S3H
CCR MS 4045 TIME 7322T
BUUS MISS HONESTY H03 FELT FIREMAN 911C
KGH MISS EPIC 4216B

Cowboy Cut does it again with this performance oriented young herd sire! This large-framed bull hit the scales with a 108 WW ratio and a 112 YW ratio, coming in with the #3 adjusted YW at 1529 pounds. His actual growth data across the board rose to the top! His maternal sister sells as Lot 81.

Lot 32 DJF M4122

Act BW: 90 lbs.
Adj WW: 704 lbs.
Adj YW: 1326 lbs.

ADG: 3.92
WDA: 3.81
Adj Scrotal: 36.0
Frame Score: 5.6

CE: 13 DOC: 12.2
BW: 0.6 CW: 31.7
WW: 84 YG: -0.33
YW: 130 Marb: 0.19
ADG: 0.29 BF: -0.041
MCE: 7 REA: 0.99
Milk: 11 API: 131
MWW: 53 TI: 80
Stay: 17

ASA#4406433 BD: 3/8/24 Tattoo: M4122

Homo Black Homo Polled 3/4 SM 1/4 AN Bull

BCLR CASH FLOW C820 CCR WIDE RANGE 9005A
BCLR MISS MONICA U820
DJF F8104 TJ MAKERS MARK 215Y
DOUBLE J MISS Y105

High percentage bull that ranks in the top 25% for WW, YW and YG along with REA at the top 15% of the breed! His weight per day of age is higher up with a 3.81!

Lot 33 KRJ M411

Act BW: 67 lbs.
Adj WW: 744 lbs.
Adj YW: 1379 lbs.

ADG: 4.03
WDA: 3.68
Adj Scrotal: 37.9
Frame Score: 5.9

CE: 21 DOC: 9.5
BW: -5.6 CW: 21.5
WW: 69 YG: -0.24
YW: 113 Marb: 0.26
ADG: 0.27 BF: -0.013
MCE: 11 REA: 0.82
Milk: 26 API: 155
MWW: 63 TI: 82
Stay: 19

ASA#4406326 BD: 2/7/24 Tattoo: M411

Homo Black Homo Polled 3/4 SM 1/4 AN Bull

R&R KRJ GOLDEN BOOK H0135 KBHR HIGH ROAD E283
R&R DREAMS E769 ET
CRAWFORD GUARANTEE 9137
KRJ K281 DDC MISS FOREVERLADY 38G

Leading off the Golden Book sire group with a highly attractive potential heifer bull from a first calf female. He has 7 EPDs that rank in the top 25% and weighed in with a 4.03 average daily gain!



Lot 34 KRJ M437

Act BW: 87 lbs.
Adj WW: 751 lbs.
Adj YW: 1301 lbs.

ADG: 3.46
WDA: 3.44
Adj Scrotal: 37.1
Frame Score: 5.4

CE: 14 DOC: 13.8
BW: 0.9 CW: 37.8
WW: 93 YG: -0.52
YW: 134 Marb: 0.17
ADG: 0.26 BF: -0.085
MCE: 9 REA: 1.33
Milk: 25 API: 148
MWW: 71 TI: 90
Stay: 18

ASA#4406349 BD: 2/11/24 Tattoo: M437

Homo Black Homo Polled Purebred SM Bull

R&R KRJ GOLDEN BOOK H0135 KBHR HIGH ROAD E283
R&R DREAMS E769 ET
OMF EPIC E27
KRJ K220 KRJ H053

It's a shame we lost Golden Book so early because his calves are equipped with a great look and solid numbers across the board. This easy fleshing son demonstrates that with 10 EPDs in the top 25% in addition to posting a 103 WW ratio at 751 pounds!

Lot 35 DJF M472

Act BW: 84 lbs.
Adj WW: 795 lbs.
Adj YW: 1421 lbs.

ADG: 3.93
WDA: 3.75
Adj Scrotal: 37.7
Frame Score: 6.2

CE: 16 DOC: 10.4
BW: -0.4 CW: 30.9
WW: 84 YG: -0.42
YW: 119 Marb: 0.14
ADG: 0.22 BF: -0.078
MCE: 9 REA: 0.97
Milk: 24 API: 150
MWW: 66 TI: 85
Stay: 20

ASA#4406383 BD: 2/14/24 Tattoo: M472

Homo Black Homo Polled Purebred SM Bull

R&R KRJ GOLDEN BOOK H0135 KBHR HIGH ROAD E283
R&R DREAMS E769 ET
MR CCF 20-20
DJF A3118

He came in with a 109 weaning weight ratio and a 104 yearling weight ratio out of a first calf heifer that stems from our R542 donor who is the dam of T739, who needs no introduction! He also has 8 EPDs in the top 25%!

Lot 36 DJF M4170

Act BW: ET
Adj WW: 697 lbs.
Adj YW: 1292 lbs.

ADG: 3.74
WDA: 3.63
Adj Scrotal: 36.9
Frame Score: 5.8

CE: 11 DOC: 13.5
BW: 1.3 CW: 62.3
WW: 90 YG: -0.51
YW: 145 Marb: 0.13
ADG: 0.35 BF: -0.097
MCE: 8 REA: 1.51
Milk: 25 API: 136
MWW: 70 TI: 88
Stay: 14

ASA#4406463 BD: 2/17/24 Tattoo: M4170

Homo Black Homo Polled Purebred SM Bull

BRIDLE BIT RECHARGE K256 BRIDLE BIT RESOURCE G9117
BRIDLE BIT MISS G948
DJF E799 GLS INTEGRATE Z3
DJF B447

A mating we have been highly anticipating and couldn't be more pleased with! Out of Recharge and E799 who has been performing exceptionally well in the donor pen. His maternal brother is Palisades who sold to Ekstrum Simmentals, and this Recharge has three full sisters in the replacement pen that are just as impressive! Ranks in the top 25% with 10 EPDs.



Lot 37 KRJ M4190

Act BW: ET
Adj WW: 810 lbs.
Adj YW: 1291 lbs.

ASA#4406482 BD: 2/26/24 Tattoo: M4190



Homo Black Homo Polled Purebred SM Bull

MR SR MIC DROP G1534 MR SR 71 RIGHT NOW E1538
MISS SR C1534

DOUBLE J MISS X011 ELLINGSON LEGACY M229
DOUBLE J MISS U828

Baldy with a standout pedigree including Mic Drop and the great X011 donor, a prolific female recognized in the Simmental breed! This bull shows strong growth and carcass in addition to 10 EPDs in the top 20%.

ADG: 3.03
WDA: 3.68
Adj Scrotal: 37.4
Frame Score: 6.2

CE:	12	DOC:	18.0
BW:	-0.4	CW:	37.2
WW:	88	YG:	-0.48
YW:	134	Marb:	-0.14
ADG:	0.28	BF:	-0.093
MCE:	8	REA:	1.13
Milk:	25	API:	122
MWW:	69	TI:	81
Stay:	15		

TEHAMA PATRIARCH F028

REFERENCE SIRE - SONS LOT 38-41

AAA# 18981191



Lot 38 DJF M438

Act BW: 76 lbs.
Adj WW: 788 lbs.
Adj YW: 1554 lbs.

ASA#4406350 BD: 2/11/24 Tattoo: M438



Homo Black Homo Polled 1/2 SM 1/2 AN Bull

TEHAMA PATRIARCH F028 S S NIAGARA Z29
TEHAMA ELITE BLACKBIRD D826

DJF K2125 BCLR CASH FLOW C820
DJF G952

This potential heifer bull does not only have extra eye appeal, but he is just as impressive on paper. He ranked as our #1 for ADG at 4.85 and had an adjusted yearling weight of 1565 pounds! This bull proves that the Cash Flow females can get it done. Expect him to inject his progeny with his good look and great performance.

ADG: 4.85
WDA: 4.13
Adj Scrotal: 39.6
Frame Score: 6.4

CE:	14	DOC:	14.8
BW:	1.0	CW:	65.8
WW:	111	YG:	-0.12
YW:	192	Marb:	0.42
ADG:	0.50	BF:	-0.024
MCE:	9	REA:	0.90
Milk:	24	API:	142
MWW:	81	TI:	103
Stay:	9		



Lot 39 KRJ M444

Act BW: 68 lbs.
Adj WW: 753 lbs.
Adj YW: 1354 lbs.

ASA#4406356 BD: 2/12/24 Tattoo: M444



Homo Black Homo Polled 1/2 SM 1/2 AN Bull

TEHAMA PATRIARCH F028 S S NIAGARA Z29
TEHAMA ELITE BLACKBIRD D826

KRJ K225 W/C NIGHT WATCH 84E
KRJ H0179

Another stud out of Patriarch that has a neat look on an awesome running gear. This potential calving ease bull is equipped with 10 EPDs in the top 20% and reads on paper to be one of our top calving ease sire prospects!

ADG: 3.82
WDA: 3.62
Adj Scrotal: 39.1
Frame Score: 4.9

CE:	20	DOC:	12.3
BW:	-4.4	CW:	31.8
WW:	77	YG:	-0.22
YW:	119	Marb:	0.45
ADG:	0.26	BF:	-0.008
MCE:	12	REA:	0.91
Milk:	27	API:	149
MWW:	67	TI:	90
Stay:	11		



Lot 40 KRJ M454

Act BW: 81 lbs.
Adj WW: 778 lbs.
Adj YW: 1487 lbs.

ASA#4406366 BD: 2/13/24 Tattoo: M454



Homo Black Homo Polled 1/2 SM 1/2 AN Bull

TEHAMA PATRIARCH F028 S S NIAGARA Z29
TEHAMA ELITE BLACKBIRD D826

KRJ K277 GQ CONOCO F6
KRJ E789

With bulls like this, it's no surprise why Patriarch has been ABS's top selling sire since 2022. This long-bodied bull is extended up front and has a 107 WW ratio and a 109 YW ratio with a well-balanced set of EPDs.

ADG: 4.49
WDA: 3.97
Adj Scrotal: 39.7
Frame Score: 5.9

CE:	14	DOC:	13.7
BW:	-2.1	CW:	42.4
WW:	86	YG:	-0.15
YW:	141	Marb:	0.44
ADG:	0.34	BF:	-0.010
MCE:	10	REA:	0.82
Milk:	27	API:	146
MWW:	72	TI:	92
Stay:	14		

Lot 41 DJF M4113

Act BW: **86 lbs.** ASA#4406424 BD: 3/2/24 Tattoo: M4113
 Adj WW: **753 lbs.** *Homo Black Homo Polled 1/2 SM 1/2 AN Bull*
 Adj YW: **1393 lbs.**
 ADG: **4.06** **TEHAMA PATRIARCH F028** S S NIAGARA Z29
 WDA: **3.78** TEHAMA ELITE BLACKBIRD D826
 Adj Scrotal: **37.7** **DJF K2108** RUBYS TURNPIKE 771E
 Frame Score: **6.0** DJF D621



His dam by Turnpike has done well considering she is a first calf heifer but had great ratios with him coming in with a 4.06 ADG. She herself was at the top end with a 115 WW ratio.

CE:	11	DOC:	11.2
BW:	1.5	CW:	66.2
WW:	90	YG:	-0.24
YW:	151	Marb:	0.52
ADG:	0.38	BF:	-0.043
MCE:	7	REA:	1.15
Milk:	27	API:	133
MWW:	74	TI:	92
Stay:	9		

Lot 42 KRJ M486

Act BW: **86 lbs.** ASA#4406397 BD: 2/17/24 Tattoo: M486
 Adj WW: **804 lbs.** *Homo Black Homo Polled 1/2 SM 1/2 AN Bull*
 Adj YW: **1452 lbs.**
 ADG: **4.11** **SYDGEN ENHANCE** SYDGEN EXCEED 3223
 WDA: **4.01** SYDGEN RITA 2618
 Adj Scrotal: **38.4** **KRJ J1124** RBS BOISE B63
 Frame Score: **6.5** KRJ F807



Enhance is known as the two-time #1 Angus bull in the breed for registrations and is the definition of high accuracy and multi-trait superiority. His EPD profile is unmatched featuring elite calving ease, growth, docility and marbling genetics with 19 traits ranking in the top 35%. This large-framed Enhance son was our #3 natural calf at weaning, weighing 804 pounds and has great ratios of 110 for WW and 106 for YW. With Enhance on the topside and Daphne in the maternal lineage, this stud has a bright future ahead. Maternal sister sells as Lot 69.

CE:	12	DOC:	11.8
BW:	-0.6	CW:	44.2
WW:	88	YG:	-0.23
YW:	148	Marb:	0.47
ADG:	0.38	BF:	-0.044
MCE:	8	REA:	0.83
Milk:	27	API:	148
MWW:	73	TI:	92
Stay:	15		

Lot 43 DJF M494

Act BW: **79 lbs.** ASA#4406405 BD: 2/19/24 Tattoo: M494
 Adj WW: **728 lbs.** *Homo Black Homo Polled 1/2 SM 1/2 AN Bull*
 Adj YW: **1345 lbs.**
 ADG: **3.92** **SYDGEN ENHANCE** SYDGEN EXCEED 3223
 WDA: **3.71** SYDGEN RITA 2618
 Adj Scrotal: **36.5** **DJF J1125** KRJ SUPREME G901
 Frame Score: **6.0** DJF G9161



Supported by a maternal pedigree that goes back to the legendary T739 donor as well as Supreme, who sold to Begger Simmentals, this potential heifer bull has a strong EPD profile with 9 traits in the top 25%!

CE:	16	DOC:	13.7
BW:	-2.3	CW:	50.3
WW:	75	YG:	-0.15
YW:	130	Marb:	0.58
ADG:	0.34	BF:	-0.027
MCE:	7	REA:	0.77
Milk:	29	API:	152
MWW:	68	TI:	90
Stay:	13		

Lot 44 DJF M4152

Act BW: **ET** ASA#4406458 BD: 2/8/24 Tattoo: M4152
 Adj WW: **605 lbs.** *Homo Black Homo Polled 1/2 SM 1/2 AN Bull*
 Adj YW: **1230 lbs.**
 ADG: **3.95** **SYDGEN ENHANCE** SYDGEN EXCEED 3223
 WDA: **3.44** SYDGEN RITA 2618
 Adj Scrotal: **38.4** **DOUBLE J MISS X011** ELLINGSON LEGACY M229
 Frame Score: **5.9** DOUBLE J MISS U828



Another bull from the great X011 donor who embodies strong growth and maternal traits! This large-scrotal bull has 9 EPDs that rank in the top 25% of the breed.

CE:	17	DOC:	16.9
BW:	-1.4	CW:	65.2
WW:	92	YG:	-0.28
YW:	155	Marb:	0.24
ADG:	0.39	BF:	-0.055
MCE:	9	REA:	1.16
Milk:	28	API:	136
MWW:	75	TI:	91
Stay:	11		

Lot 45 DJF M455

Act BW: **96 lbs.** ASA#4406367 BD: 2/13/24 Tattoo: M455
 Adj WW: **710 lbs.** *Homo Black Homo Polled 3/8 SM 5/8 AN Bull*
 Adj YW: **1414 lbs.**
 ADG: **4.42** **W/C REVOLUTION 65G** MR SR 71 RIGHT NOW E1538
 WDA: **3.94** W/C MISS WERNING 65D
 Adj Scrotal: **40.7** **DOUBLE J MISS C5131** MOHNEN LONG DISTANCE 1639
 Frame Score: **6.4** DOUBLE J MISS Y1106



The natural calf from our C5131 donor who exhibits high milk and maternal traits in addition to a large scrotal. He posted a 103 YW ratio, weighing in at 1414 pounds! Plus, he had a 4.42 average daily gain and a 3.94 weight per day of age.

CE:	12	DOC:	13.2
BW:	-0.5	CW:	47.1
WW:	79	YG:	0.03
YW:	136	Marb:	0.34
ADG:	0.35	BF:	-0.022
MCE:	4	REA:	0.23
Milk:	33	API:	128
MWW:	73	TI:	81
Stay:	14		



KIPP JULSON || Cell 605-351-9088 || Sale Day Landline 605-594-2310
 Check out all sale videos online early in the New Year at www.DVAuction.com

NEXT LEVEL, SIRE



Lot 46

DJF M4189

Act BW: ET
Adj WW: 696 lbs.
Adj YW: 1273 lbs.
ADG: 3.66
WDA: 3.63
Adj Scrotal: 34.8
Frame Score: 5.6
CE: 11
BW: 2.5
WW: 89
YW: 143
ADG: 0.34
MCE: 2
Milk: 25
MWW: 70
Stay: 12

ASA#4406481 BD: 2/25/24 Tattoo: M4189
Homo Black Homo Polled 1/2 SM 1/2 AN Bull



NEXT LEVEL KRJ DAKOTA OUTLAW G974
KRDL CAEDENCE C37
DOUBLE J MISS C5131 MOHNEN LONG DISTANCE 1639
DOUBLE J MISS Y1106

Next Level is a popular Outlaw son that has taken the breed by storm and has been well accepted across the country. This son out of C5131 has five full sisters in the open heifer pen that have been popular by those who have stopped and walked through!



Lot 47

DJF M4151

Act BW: ET
Adj WW: 705 lbs.
Adj YW: 1289 lbs.
ADG: 3.70
WDA: 3.63
Adj Scrotal: 37.3
Frame Score: 6.3
CE: 12
BW: 1.1
WW: 98
YW: 155
ADG: 0.36
MCE: 6
Milk: 22
MWW: 72
Stay: 10

ASA#4406457 BD: 2/6/24 Tattoo: M4151
Homo Black Homo Polled 1/2 SM 1/2 AN Bull



SITZ STELLAR 726D MOHNEN SUBSTANTIAL 272
SITZ PRIDE 200B
DOUBLE J MISS X011 ELLINGSON LEGACY M229
DOUBLE J MISS U828

An individual from the prolific donor, X011, who has 110 calves to date and a 106 WW ratio and a 109 YW ratio! His sire, Stellar, is responsible for the most dominant sire line in the Angus breed. He is a proven foot quality maker that transmits adding substance, fleshing ability and muscle shape to progeny. This son has WW, YW and CW EPDs in the top 10%.



Lot 48

KRJ M466

Act BW: 80 lbs.
Adj WW: 685 lbs.
Adj YW: 1349 lbs.
ADG: 4.19
WDA: 3.70
Adj Scrotal: 38.2
Frame Score: 6.0
CE: 17
BW: -3.1
WW: 82
YW: 134
ADG: 0.33
MCE: 8
Milk: 28
MWW: 69
Stay: 18

ASA#4406378 BD: 2/14/24 Tattoo: M466
Homo Black Homo Polled 3/4 SM 1/4 AN Bull



GIBBS 9114G ESSENTIAL GIBBS 7382E BROAD RANGE
GIBBS 7153E STAR 3136A
KRJ J157 TKCC CLASSIFIED
DOUBLE J MISS C5131

There are few highly proven bulls that sire the kind of spread from BW to WW and YW that Essential offers which is why he is the #1 spread bull in the Simmental breed! Lot 48 is a potential calving ease bull but use with caution as he had a higher birthweight and an average daily gain of 4.19. This grandson of C5131 has 10 EPDs in the top 25%. His maternal sister sells as Lot 74.

Lot 49 KRJ M423

Act BW: 92 lbs.
Adj WW: 740 lbs.
Adj YW: 1409 lbs.
ADG: 4.22
WDA: 3.72
Adj Scrotal: 38.5
Frame Score: 6.4
CE: 13
BW: 0.0
WW: 86
YW: 138
ADG: 0.33
MCE: 8
Milk: 30
MWW: 73
Stay: 19

ASA#4406336 BD: 2/9/24 Tattoo: M423
Homo Black Homo Polled Purebred SM Bull



GIBBS 9114G ESSENTIAL GIBBS 7382E BROAD RANGE
GIBBS 7153E STAR 3136A
KRJ K2123 LCDR/KRJ INVENTION 138G
KRJ B405

Up next from a first calf heifer is a bull that holds 12 EPDs in the top 20% of the breed along with a 4.22 average daily gain. His granddam was purchased by Horizon View Farms.

Lot 50

KRJ M408

Act BW: 61 lbs.
Adj WW: 729 lbs.
Adj YW: 1366 lbs.
ADG: 4.01
WDA: 3.57
Adj Scrotal: 37.8
Frame Score: 5.1
CE: 19
BW: -3.2
WW: 91
YW: 149
ADG: 0.37
MCE: 10
Milk: 28
MWW: 74
Stay: 14

ASA#4406323 BD: 2/6/24 Tattoo: M408
Homo Black Homo Polled Purebred SM Bull



GIBBS 9114G ESSENTIAL GIBBS 7382E BROAD RANGE
GIBBS 7153E STAR 3136A
KRJ K2175 RUBYS TURNPIKE 771E
BRKC DAPHNE DY37

Essential has separated himself from the pack as the #1 spread bull in the breed and this son follows suit with a strong spread from BW to YW. This potential heifer bull has a great EPD profile with BW in the top 5%, plus his dam is a full sibling to Outlaw!

Lot 51 KRJ M4111

Act BW: 80 lbs.
Adj WW: 697 lbs.
Adj YW: 1307 lbs.
ADG: 3.86
WDA: 3.53
Adj Scrotal: 33.7
Frame Score: 5.2

CE: 16
BW: -2.1
WW: 79
YW: 122
ADG: 0.27
MCE: 9
Milk: 23
MWW: 62
Stay: 19

ASA#4406422 BD: 3/2/24 Tattoo: M4111
Homo Black Homo Polled Purebred SM Bull
MLC MR DIRECT DEPOSIT K686 KRJ HZN DIRECT IMPACT F805
MLC MS COLORADO H441
KRJ K217 GQ CONOCO F6
KRJ G9110

After raising Direct Impact who is Heterozygous Black and choosing to keep our cow herd completed Homozygous Polled, Homozygous Black and being non-diluters, I was in search of a son that would meet my criteria. Direct Deposit has done that as our heifer safe herd sire who is Right Choice tested ACE and with a G+ rating and has the great sire of Colorado in his pedigree who has proven himself with seedstock and commercial cattle producers across the country!

Lot 52 DJF M4120

Act BW: 76 lbs.
Adj WW: 702 lbs.
Adj YW: 1256 lbs.
ADG: 3.50
WDA: 3.61
Adj Scrotal: 36.9
Frame Score: 4.8

CE: 20
BW: -3.4
WW: 66
YW: 100
ADG: 0.22
MCE: 13
Milk: 26
MWW: 59
Stay: 17

ASA#4406431 BD: 3/7/24 Tattoo: M4120
Homo Black Homo Polled 3/4 SM 1/4 AN Bull
APEX KRJ DOCUMENT BE473J WS PROCLAMATION E202
D 7008 ROYAL LASS E7116
DJF F875 RBS BOISE B63
DJF C574

The next trio of bulls are out of Document who is a long bodied, big scrotal bull who was tested by Right Choice and earned Accredited Calving Ease (ACE) and a G+ rating! This potential heifer bull goes back to an easy-fleshing cow family that traces to the mother of T739.

Lot 53 DJF M4121

Act BW: 78 lbs.
Adj WW: 573 lbs.
Adj YW: 1154 lbs.
ADG: 3.67
WDA: 3.21
Adj Scrotal: 33.9
Frame Score: 4.3

CE: 13
BW: -1.5
WW: 76
YW: 114
ADG: 0.23
MCE: 7
Milk: 21
MWW: 59
Stay: 15

ASA#4406432 BD: 3/7/24 Tattoo: M4121
Homo Black Homo Polled 3/4 SM 1/4 AN Bull
APEX KRJ DOCUMENT BE473J WS PROCLAMATION E202
D 7008 ROYAL LASS E7116
DJF J130 GIBBS 7382E BROAD RANGE
DJF G978

Here is a potential heifer bull whose dam is out of Broad Range, a highly proven, calving ease mainstay sire with 13 EPDs in the top 20% while offering breed-leading WW and YW.

Lot 54 KRJ M4108

Act BW: 90 lbs.
Adj WW: 641 lbs.
Adj YW: 1221 lbs.
ADG: 3.66
WDA: 3.51
Adj Scrotal: 39.6
Frame Score: 5.0

CE: 14
BW: -0.4
WW: 83
YW: 128
ADG: 0.28
MCE: 9
Milk: 21
MWW: 63
Stay: 12

ASA#4406419 BD: 2/29/24 Tattoo: M4108
Homo Black Homo Polled 3/4 SM 1/4 AN Bull
APEX KRJ DOCUMENT BE473J WS PROCLAMATION E202
D 7008 ROYAL LASS E7116
KRJ F807 CCR SANTA FE 9349Z
BRKC DAPHNE DY37

Daphne can be traced back in many pedigrees which demonstrates how she has continued to work for us throughout the years. This big scrotal bull's maternal sister is the baldy female selling as Lot 68.

Lot 55 KRJ M441

Act BW: 80 lbs.
Adj WW: 799 lbs.
Adj YW: 1477 lbs.
ADG: 4.28
WDA: 3.93
Adj Scrotal: 41.1
Frame Score: 6.9

CE: 15
BW: -2.4
WW: 89
YW: 137
ADG: 0.30
MCE: 9
Milk: 27
MWW: 71
Stay: 18

ASA#4406353 BD: 2/11/24 Tattoo: M441
Homo Black Homo Polled 3/4 SM 1/4 AN Bull
JC MR TALON 403G HOOK'S EAGLE 6E
JC MS FORCE 403B
KRJ K2105 LBRS GENESIS G69
KRJ E7106

Talon is the definition of practical and balanced by producing dense made, thick, easy doing calves that grow well which is the needed kind for today's profit driven production. Like his sire, this bull has a notable spread from birth to weaning, weighing in at #4 at 800 pounds alongside a WW ratio of 110 and a 4.28 ADG. This large-framed bull has 12 EPDs in the top 20% with API in the top 10% and TI ranking in the top 5%! Potential heifer bull but use with caution.



Lot 56 KRJ M409

Act BW: 75 lbs.
Adj WW: 659 lbs.
Adj YW: 1309 lbs.
ADG: 4.10
WDA: 3.42
Adj Scrotal: 36.8
Frame Score: 5.1

CE: 18
BW: -4.2
WW: 69
YW: 108
ADG: 0.24
MCE: 11
Milk: 23
MWW: 57
Stay: 21

ASA#4406324 BD: 2/6/24 Tattoo: M409
Homo Black Homo Polled 3/4 SM 1/4 AN Bull
JC MR TALON 403G HOOK'S EAGLE 6E
JC MS FORCE 403B
KRJ K2111 MR ISHEE TRIPLE TRAIL BLAZER
KRJ G983

Heifer safe bull is up next that came small but grew well with a 4.1 average daily gain. His dam is out of Trailblazer who has outstanding calving ease and birth weight EPDs with strong maternal traits that are off the charts!

Lot 57 KRJ M407


Act BW: 82 lbs.
Adj WW: 745 lbs.
Adj YW: 1324 lbs.
ADG: 3.66
WDA: 3.51
Adj Scrotal: 34.8
Frame Score: 5.8

CE: 13
BW: -1.3
WW: 80
YW: 123
ADG: 0.27
MCE: 8
Milk: 25
MWW: 65
Stay: 19

ASA#4406322 BD: 2/5/24 Tattoo: M407
Homo Black Homo Polled 5/8 SM 3/8 AN Bull
JC MR TALON 403G HOOK'S EAGLE 6E
JC MS FORCE 403B
KRJ K2112 KRJ DAKOTA OUTLAW G974
KRJ B4118

Talon was one of the highest spread bulls to sell in 2020 and has top 10% rankings for growth genetics. From a first calf Outlaw daughter, this bull posted a 102 weaning weight ratio.


Lot 58 KRJ M424

Act BW: 77 lbs. ASA#4406337 BD: 2/9/24 Tattoo: M424 
 Adj WW: 760 lbs. *Homo Black Homo Polled 3/4 SM 1/4 AN Bull*
 Adj YW: 1308 lbs.
 ADG: 3.48 **LRS FALCON 442G** HOOK'S EAGLE 6E
 WDA: 3.52 LRS MS CLASS ACT 437B
 Adj Scrotal: 36.5 **KRJ K264** LBRS GENESIS G69
 Frame Score: 5.4 DOUBLE J MISS E787

Falcon is a standout for performance with his YW EPD in the top 2% and ADG in the top 1% of the Simmental breed. This son has growth and carcass EPDs in the top 10% with API in the top 20% all while being from a great first calf Genesis female!

CE: 15	DOC: 17.9
BW: -1.0	CW: 43.8
WW: 84	YG: -0.17
YW: 127	Marb: 0.69
ADG: 0.27	BF: -0.009
MCE: 7	REA: 0.91
Milk: 24	API: 167
MWW: 66	TI: 94
Stay: 19	

Lot 59 KRJ M450


Act BW: 83 lbs. ASA#4406362 BD: 2/12/24 Tattoo: M450 
 Adj WW: 760 lbs. *Homo Black Homo Polled Purebred SM Bull*
 Adj YW: 1372 lbs.
 ADG: 3.87 **LRS FALCON 442G** HOOK'S EAGLE 6E
 WDA: 3.66 LRS MS CLASS ACT 437B
 Adj Scrotal: 36.1 **KRJ K216** MR SR 71 RIGHT NOW E1538
 Frame Score: 5.9 KRJ H001

With 11 EPDs in the top 25%, this bull has potential to be a purebred calving ease sire! He is out of a first calf heifer who had a 110 WW ratio which was at the top.

CE: 13	DOC: 14.6
BW: -1.2	CW: 27.9
WW: 87	YG: -0.31
YW: 136	Marb: 0.41
ADG: 0.30	BF: -0.033
MCE: 7	REA: 0.94
Milk: 24	API: 162
MWW: 67	TI: 95
Stay: 19	



Lot 60 KRJ M457

Act BW: 105 lbs. ASA#4406369 BD: 2/13/24 Tattoo: M457 
 Adj WW: 815 lbs. *Red Homo Polled 3/4 SM 1/4 AR Bull*
 Adj YW: 1433 lbs.
 ADG: 3.89 **MFSR ROUNDUP 665H** CDI HOMETOWN 246A
 WDA: 4.09 MFSR BIG SKY 351C
 Adj Scrotal: 39.7 **PGF RED GAL F746** NBAR HAMLEY S913
 Frame Score: 5.9 PGF RED GAL A582

It's easy to find this red powerhouse as he came in with a 112 WW ratio and a 105 YW ratio. Out of one of my favorite red cows who posted a 104 WW ratio on five head and a 102 YW ratio on three bulls. His full brother was a standout two years ago and this one is no different!

CE: 7	DOC: 8.8
BW: 3.8	CW: 14.9
WW: 89	YG: -0.44
YW: 128	Marb: 0.35
ADG: 0.25	BF: -0.074
MCE: 4	REA: 0.87
Milk: 29	API: 124
MWW: 74	TI: 84
Stay: 15	

3170 - FULL BROTHER




Lot 61 KRJ M4142

Act BW: ET ASA#4406451 BD: 1/30/24 Tattoo: M4142 
 Adj WW: 692 lbs. *Red Homo Polled 1/2 SM 1/2 AR Bull*
 Adj YW: 1248 lbs.
 ADG: 3.53 **ROCKIN H CAPTIVATE J75** THSF LOVER BOY B33
 WDA: 3.52 ROCKIN H MS.CAROLINA
 Adj Scrotal: 38.9 **JUNG MS MULBERRY 825-2657** RED FINE LINE MULBERRY 26P
 Frame Score: 6.2 NER COPPER QUEEN 2657

This Captivate x Mulberry cross caught a lot of attention last year with five brothers averaging \$6,900! His full brother pictured sold to Arnold Brothers Simmental Ranch.

CE: 15	DOC: 12.7
BW: -1.2	CW: 33.6
WW: 70	YG: -0.23
YW: 106	Marb: 0.26
ADG: 0.22	BF: -0.045
MCE: 9	REA: 0.67
Milk: 27	API: 131
MWW: 62	TI: 76
Stay: 16	


Lot 62 KRJ M483

Act BW: 88 lbs. ASA#4406394 BD: 2/16/24 Tattoo: M483 
 Adj WW: 695 lbs. *Red Homo Polled Purebred SM Bull*
 Adj YW: 1350 lbs.
 ADG: 4.13 **DCR MR KILLIAN K70** DCR MR HARD IMPACT H69
 WDA: 3.69 DCR MISS IMPERIAL H95
 Adj Scrotal: 38.9 **KRJ J169** VOLK BACKDRAFT CC F810
 Frame Score: 5.7 ASR MS SUPER BALDY D656

The Killian bull goes back to Direct Impact who was raised right here on this place! This second calf has been doing exceptionally well with this cherry red bull who posted a 4.13 average daily gain!

CE: 13	DOC: 11.6
BW: 0.1	CW: 35.7
WW: 83	YG: -0.37
YW: 127	Marb: 0.27
ADG: 0.27	BF: -0.053
MCE: 8	REA: 1.08
Milk: 25	API: 143
MWW: 66	TI: 87
Stay: 15	

Lot 63 KRJ M485

Act BW: 75 lbs. ASA#4406396 BD: 2/16/24 Tattoo: M485 
 Adj WW: 666 lbs. *Red Homo Polled Purebred SM Bull*
 Adj YW: 1295 lbs.
 ADG: 3.95 **DCR MR KILLIAN K70** DCR MR HARD IMPACT H69
 WDA: 3.61 DCR MISS IMPERIAL H95
 Adj Scrotal: 37.9 **KRJ G960** KWA LAW MAKER 59C
 Frame Score: 5.7 KS MS MADAGASCAR C525

Potential heifer bull if used with caution due to his great growth! His dam posted a 105 WW ratio and a 104 YW ratio on 4 bulls that have sold to top end red cow herds, with her son last year bringing \$13,000!

CE: 15	DOC: 10.0
BW: -1.8	CW: 35.7
WW: 76	YG: -0.40
YW: 118	Marb: 0.29
ADG: 0.26	BF: -0.071
MCE: 8	REA: 1.04
Milk: 29	API: 159
MWW: 67	TI: 87
Stay: 20	

Lot 64 M470

Act BW: 70 lbs. ASA#4405321 BD: 2/14/24 Tattoo: M470
 Adj WW: 694 lbs. *Homo Black Homo Polled Purebred AN Bull*
 Adj YW: 1268 lbs.

ADG: 3.60
 WDA: 3.41
 Adj Scrotal: 36.2
 Frame Score: 4.7
 CE: 13 DOC: 12.1
 BW: -2.1 CW: 54.3
 WW: 90 YG: 0.19
 YW: 152 Marb: 0.79
 ADG: 0.38 BF: 0.037
 MCE: 6 REA: 0.30
 Milk: 26 API: 144
 MWW: 71 TI: 90
 Stay: 13

SITZ RESILIENT 10208 SITZ STELLAR 726D
 SITZ MISS BURGESS 1856
LONG U MEMORY 116 TEHAMA TAHOE B767
 LONG U MEMORY 912

Practical maternal genetics and design from a popular high satisfaction sire. Potential calving ease Angus bull. AAA #21033057



DOUBLE J MISS X011



DOUBLE J MISS C5131



Lot 65
PICK OF THE OPEN HEIFERS

*This year we are bringing you an **EXCLUSIVE OPPORTUNITY** to purchase a pick of the replacement heifers which is something that we have never offered!*

There are 85 females to choose from, which 30 are embryo transplants. There are many heifers out of our famous donors and a wide range of sires. Take advantage of this exciting opportunity because I truly believe that our cows really make the difference!

All heifers are homozygous polled, coat color tested, parent verified and will have enhanced EPDs. Complete information sheets will be posted on our website. We ask that the selection to be made by April 1, 2025.

NEXT LEVEL



BRIDLE BIT RECHARGE K256



BRKC DAPHNE DY37



There is no question that Daphne has made a large impact at our place throughout the years. She's well known for producing high sellers including Dakota Outlaw for \$31,000 to Beitelspacher Ranch and Jesse James who sold to Heartland Simmentals. These two daughters by Revolution should have no difficulty following in their dam's footsteps in creating their own legacy for their new owners. Lot 66 is due early to Galileo who offers a high degree of calving ease without sacrificing growth. Lot 67 was at the top for weaning weight of our replacement heifers. She is bred to our herd sire, Direct Deposit who tested by Right Choice earning Accredited Calving Ease (ACE) and a G+ rating!

Lot 66 KRJ L3155

CE:	10	DOC:	12.4
BW:	3.1	CW:	36.1
WW:	95	YG:	-.43
YW:	146	Marb:	-.02
ADG:	.32	BF:	-.109
MCE:	5	REA:	.82
Milk:	28	API:	113
MWW:	75	TI:	84
Stay:	10		

ASA#4248247 BD: 2/17/23 Tattoo: L3155

Black Homo Polled Purebred SM Cow

AI Sire (5/2/24): **Hook's Galileo 210G (ASA#3563620)**

Due: 2/8/25 - Safe to AI Sire

Pasture Sire (6/1 to 7/1/24): **MLC Mr Direct Deposit K686**

PLAN MATING EST EPD

CE:	BW:	WW:	YW:	ADG:	MCE:	MILK:	MWW:	STAY:
14	.5	93	143	.32	9	34	80	14
DOC:	CW:	YG:	MARB:	BF:	REA:	API:	TI:	
16.1	42.9	-.29	.60	-.07	.76	163	101	



*Lots 66 & 67
Full Sisters!*

W/C REVOLUTION 65G MR SR 71 RIGHT NOW E1538
W/C MISS WERNING 65D
BRKC DAPHNE DY37 LLSF UPRISING Z925
HSF/HS SCARLETT Y165

Lot 67 KRJ L3178

CE:	10	DOC:	12.4
BW:	3.1	CW:	36.1
WW:	95	YG:	-.43
YW:	146	Marb:	-.02
ADG:	.32	BF:	-.109
MCE:	5	REA:	.82
Milk:	28	API:	113
MWW:	75	TI:	84
Stay:	10		

ASA#4248268 BD: 2/26/23 Tattoo: L3178

Black Homo Polled Purebred SM Cow

AI Sire (5/22/24): **Hook's Galileo 210G (ASA#3563620)**

Pasture Sire (6/1 to 7/1/24): **MLC Mr Direct Deposit K686**

(ASA#4130067) Due: 3/20/25 - Safe to Pasture Sire

PLAN MATING EST EPD

CE:	BW:	WW:	YW:	ADG:	MCE:	MILK:	MWW:	STAY:
13	.8	88	137	.31	6	27	71	15
DOC:	CW:	YG:	MARB:	BF:	REA:	API:	TI:	
12.1	35.7	-.38	.24	-.08	.88	144	89	



Lot 68 KRJ L366

CE:	12	DOC:	13.9
BW:	.4	CW:	37.9
WW:	89	YG:	-.25
YW:	132	Marb:	.07
ADG:	.27	BF:	-.055
MCE:	6	REA:	.70
Milk:	19	API:	118
MWW:	63	TI:	80
Stay:	14		

ASA#4248188 BD: 2/16/23 Tattoo: L366

Homo Black Homo Polled 3/4 SM 1/4 AN Cow

TJ FROSTY 318E ACW IRONHIDE 395Y
TJ 58B

KRJ F807 CCR SANTA FE 9349Z
BRKC DAPHNE DY37

AI Sire (5/2/24): **TJ Klondike 549K (ASA#4065070)**

Due: 2/8/25 - Safe to AI Sire

Pasture Sire (6/1 to 7/1/24): **MLC Mr Direct Deposit K686**

PLAN MATING EST EPD

CE:	BW:	WW:	YW:	ADG:	MCE:	MILK:	MWW:	STAY:
15	-1.6	85	128	.27	8	27	69	15
DOC:	CW:	YG:	MARB:	BF:	REA:	API:	TI:	
15.0	40.4	-.08	.41	.00	.62	147	89	

The lone baldy female has gained a lot of attention with her attractive look and perfect blaze. This big bodied, broody cow is AI safe to Klondike who has exceptional calving ease, growth and marbling. Plus, with Daphne tracing back in her pedigree, she should bring high customer satisfaction.

Lot 69 KRJ L338

CE:	14	DOC:	13.5
BW:	-1.0	CW:	26.6
WW:	86	YG:	-.53
YW:	127	Marb:	-.06
ADG:	.25	BF:	-.103
MCE:	10	REA:	1.06
Milk:	25	API:	135
MWW:	68	TI:	86
Stay:	14		

ASA#4248160 BD: 2/13/23 Tattoo: L338

Homo Black Homo Polled Purebred SM Cow

MR SR 71 RIGHT NOW E1538 HOOK'S BOZEMAN 8B

MISS SR C1538

KRJ J1124

RBS BOISE B63

KRJ F807

AI Sire (5/2/24): Tehama Patriarch F028 (ASA#3718806)

Due: 2/8/25 - Safe to AI Sire

Pasture Sire (6/1 to 7/1/24): MLC Mr Direct Deposit K686

PLAN MATING EST EPD

CE:	BW:	WW:	YW:	ADG:	MCE:	MILK:	MWW:	STAY:
16	-2.5	85	142	.36	12	28	71	14
DOC:	CW:	YG:	MARB:	BF:	REA:	API:	TI:	
13.1	46.6	-.18	.47	-.03	.83	150	92	

With Daphne being the great-granddam, here is proof that she has been working throughout generations. This bred's dam posted a 110 weaning weight ratio on two and is the mother of Lot 42. Bred to the deceased proven AI sire, Patriarch, who has had high customer satisfaction being ABS's top seller since 2022.



DVAuction
Broadcasting Real-Time Auctions

Lot 70 DJF L379

CE:	11	DOC:	12.4
BW:	1.4	CW:	35.2
WW:	92	YG:	-.60
YW:	135	Marb:	-.03
ADG:	.27	BF:	-.112
MCE:	6	REA:	1.32
Milk:	21	API:	127
MWW:	67	TI:	84
Stay:	16		

ASA#4248201 BD: 2/18/23 Tattoo: L379

Homo Black Homo Polled Purebred SM Cow

KRJ DAKOTA OUTLAW G974 RUBYS TURNPIKE 771E

BRKC DAPHNE DY37

DJF G949

RBS BOISE B63

DJF B447

AI Sire (5/21/24): Tehama Patriarch F028 (ASA#3718806)

Due: 2/27/25 - Safe to AI Sire

Pasture Sire (6/1 to 7/1/24): MLC Mr Direct Deposit K686

PLAN MATING EST EPD

CE:	BW:	WW:	YW:	ADG:	MCE:	MILK:	MWW:	STAY:
15	-1.3	88	146	.37	10	25	71	14
DOC:	CW:	YG:	MARB:	BF:	REA:	API:	TI:	
12.6	50.9	-.22	.42	-.03	.96	147	91	

An Outlaw daughter that exhibits highly sought after growth and carcass traits in the top 1% and 2% of the breed! Her two maternal brothers sold to top end cattlemen.



Lot 71 DJF L371

CE:	10	DOC:	12.3
BW:	2.1	CW:	33.1
WW:	92	YG:	-.61
YW:	134	Marb:	-.07
ADG:	.26	BF:	-.118
MCE:	5	REA:	1.28
Milk:	23	API:	121
MWW:	69	TI:	82
Stay:	15		

ASA#4248193 BD: 2/16/23 Tattoo: L371

Homo Black Homo Polled Purebred SM Cow

KRJ DAKOTA OUTLAW G974 RUBYS TURNPIKE 771E

BRKC DAPHNE DY37

DJF F875

RBS BOISE B63

DJF C574

AI Sire (5/2/24): HA Magnifique 72L (ASA#4196053)

Due: 2/8/25 - Safe to AI Sire

Pasture Sire (6/1 to 7/1/24): MLC Mr Direct Deposit K686

PLAN MATING EST EPD

CE:	BW:	WW:	YW:	ADG:	MCE:	MILK:	MWW:	STAY:
16	-1.5	83	123	.25	10	29	70	18
DOC:	CW:	YG:	MARB:	BF:	REA:	API:	TI:	
3.0	32.2	-.37	.58	-.06	.96	172	97	

Sired by Outlaw and a pedigree that traces back to the mother of the great T739 Donor is a recipe for success! Bred up early to the exciting new sire, Magnifique, assurance of his predicable calving ease will add valuable economic and genetic merit.



KRJ DAKOTA OUTLAW G974, SIRE OF LOTS 70 & 71



Lot 72 KRJ L344

CE:	11	DOC:	16.1
BW:	3.0	CW:	46.0
WW:	84	YG:	-.28
YW:	130	Marb:	.16
ADG:	.29	BF:	-.059
MCE:	5	REA:	.87
Milk:	20	API:	128
MWW:	62	TI:	81
Stay:	14		

ASA#4248166 BD: 2/14/23 Tattoo: L344
Homo Black Homo Polled Purebred SM Cow
WBF SIGNIFICANT B132 GW-WBF SUBSTANCE 820Y
 WBF HEBE X376
KRJ F8112 TJ MAKERS MARK 215Y
 DOUBLE J MISS X025

AI Sire (5/2/24): **Hook's Galileo 210G (ASA#3563620)**
 Due: 2/8/25 – Safe to AI Sire
 Pasture Sire (6/1 to 7/1/24): **MLC Mr Direct Deposit K686**

PLAN MATING EST EPD									
CE:	BW:	WW:	YW:	ADG:	MCE:	MILK:	MWW:	STAY:	
14	.4	87	135	.30	9	30	73	16	
DOC:	CW:	YG:	MARB:	BF:	REA:	API:	TI:		
17.9	47.8	-.22	.69	-.05	.79	171	99		

Eye appealing female who's long bodied, deep sided and extended up front with a pedigree that is backed by great sires of the breed! She is AI safe to Galileo who is at the top for STAY, Maternal, and \$ Index values presenting added credibility to the cow herd building potential.

Lot 73 KRJ L376

CE:	12	DOC:	12.8
BW:	.5	CW:	36.6
WW:	67	YG:	-.07
YW:	106	Marb:	.43
ADG:	.24	BF:	-.016
MCE:	5	REA:	.44
Milk:	24	API:	129
MWW:	58	TI:	76
Stay:	14		

ASA#4248198 BD: 2/18/23 Tattoo: L376
Homo Black Polled 1/2 SM 1/2 AN Cow
LLSF PAYS TO BELIEVE ZU194 CNS PAYS TO DREAM T759
 LLSF URA BABY DOLL U194
DOUBLE J MISS C5131 MOHNN LONG DISTANCE 1639
 DOUBLE J MISS Y1106

AI Sire (5/2/24): **HA Magnifique 72L (ASA#4196053)**
 Due: 2/8/25 – Safe to AI Sire
 Pasture Sire (6/1 to 7/1/24): **MLC Mr Direct Deposit K686**

PLAN MATING EST EPD									
CE:	BW:	WW:	YW:	ADG:	MCE:	MILK:	MWW:	STAY:	
17	-2.3	70	108	.24	9	30	64	17	
DOC:	CW:	YG:	MARB:	BF:	REA:	API:	TI:		
13.3	33.9	-.10	.83	-.01	.54	172	91		

A little bit different pedigree but her dam is rising to be a consistent producer in the donor pen. C5131's five ET daughters by Next Level (Outlaw son) are extremely attractive and could easily leap to the top pick of the open replacement heifer lot! She is due early to Magnifique who is at the top 1% CE and 2% BW!

Lot 74 KRJ L301

CE:	13	DOC:	14.7
BW:	-1.5	CW:	28.3
WW:	77	YG:	-.35
YW:	119	Marb:	.26
ADG:	.26	BF:	-.068
MCE:	7	REA:	.81
Milk:	24	API:	128
MWW:	62	TI:	81
Stay:	13		

ASA#4248126 BD: 2/3/23 Tattoo: L301
Homo Black Homo Polled 3/4 SM 1/4 AN Cow
MR SR 71 RIGHT NOW E1538 HOOK'S BOZEMAN 8B
 MISS SR C1538
KRJ J157 TKCC CLASSIFIED
 DOUBLE J MISS C5131

AI Sire (5/2/24): **HA Magnifique 72L (ASA#4196053)**
 Due: 2/8/25 – Safe to AI Sire
 Pasture Sire (6/1 to 7/1/24): **MLC Mr Direct Deposit K686**

PLAN MATING EST EPD									
CE:	BW:	WW:	YW:	ADG:	MCE:	MILK:	MWW:	STAY:	
18	-3.3	75	115	.25	10	29	67	17	
DOC:	CW:	YG:	MARB:	BF:	REA:	API:	TI:		
14.2	29.8	-.24	.75	-.04	.72	176	96		

Following in her grandmother's footsteps, we think a lot of this one's pedigree that consists of Right Now and Classified which should bring great maternal output! Her maternal brother sells as Lot 48.



Lot 75 KRJ L368

CE:	14	DOC:	12.6
BW:	-.3	CW:	33.4
WW:	86	YG:	-.34
YW:	130	Marb:	.40
ADG:	.28	BF:	-.045
MCE:	8	REA:	1.01
Milk:	24	API:	162
MWW:	67	TI:	93
Stay:	19		

ASA#4248190 BD: 2/16/23 Tattoo: L368
Homo Black Homo Polled Purebred SM Cow
KBHR HARTLAND H100 TJ HEISMAN 388F
 KBHR E084
KRJ G930 BCLR CASH FLOW C820
 DOUBLE J MISS Z257

AI Sire (5/26/24): **MLC Mr Direct Deposit K686 (ASA#4130067)**
 Due: 3/4/25 – Safe to AI Sire
 Pasture Sire (6/1 to 7/1/24): **MLC Mr Direct Deposit K686**

PLAN MATING EST EPD									
CE:	BW:	WW:	YW:	ADG:	MCE:	MILK:	MWW:	STAY:	
16	-1.0	84	129	.29	8	25	66	20	
DOC:	CW:	YG:	MARB:	BF:	REA:	API:	TI:		
12.2	34.4	-.33	.45	-.05	.97	169	93		

Her granddam produced the E774 donor who is the mother of Lot 1, a 20-20 son that is a sale highlight this year! This female has well balanced EPDs across the board and is safe to Direct Deposit who is an ACE and G+ rated bull.

KIPP JULSON || Cell 605-351-9088 || Sale Day Landline 605-594-2310
 Check out all sale videos online early in the New Year at www.DVAuction.com

Lot 76 DJF L326

CE:	16	DOC:	13.1
BW:	-1.7	CW:	33.6
WW:	73	YG:	-12
YW:	115	Marb:	.45
ADG:	.26	BF:	-.015
MCE:	10	REA:	.57
Milk:	25	API:	151
MWW:	61	TI:	83
Stay:	19		

ASA#4248149 BD: 2/10/23 Tattoo: L326
Homo Black Homo Polled 5/8 SM 3/8 AN Cow

AI Sire (5/20/24): **Apex KRJ Document BE473J (ASA#3920769)**
Due: **2/26/25 - Safe to AI Sire**
Pasture Sire (6/1 to 7/1/24): **MLC Mr Direct Deposit K686**

PLAN MATING EST EPD

CE:	BW:	WW:	YW:	ADG:	MCE:	MILK:	MWW:	STAY:
16	-1.8	77	124	.29	10	27	65	16
DOC:	CW:	YG:	MARB:	BF:	REA:	API:	TI:	
14.5	35.4	-.05	.51	.00	.45	154	87	

Lot 77 DJF L327

CE:	16	DOC:	13.1
BW:	-1.7	CW:	33.6
WW:	73	YG:	-12
YW:	115	Marb:	.45
ADG:	.26	BF:	-.015
MCE:	10	REA:	.57
Milk:	25	API:	151
MWW:	61	TI:	83
Stay:	19		

ASA#4248150 BD: 2/10/23 Tattoo: L327
Homo Black Homo Polled 5/8 SM 3/8 AN Cow

AI Sire (5/2/24): **HA Magnifique 72L (ASA#4196053)**
Due: **2/8/25 - Safe to AI Sire**
Pasture Sire (6/1 to 7/1/24): **MLC Mr Direct Deposit K686**

PLAN MATING EST EPD

CE:	BW:	WW:	YW:	ADG:	MCE:	MILK:	MWW:	STAY:
19	-3.4	73	113	.25	12	30	66	20
DOC:	CW:	YG:	MARB:	BF:	REA:	API:	TI:	
13.4	32.4	-.12	.84	-.01	.60	187	97	

*Lots 76 & 77
Full Sisters!*

KBHR HARTLAND H100 TJ HEISMAN 388F
KBHR E084
DJF F825 TJ MAKERS MARK 215Y
DOUBLE J MISS Y107

Backed by a proven cow family with a granddam that has posted a 107 YW ratio on four big, powerful bulls! Lot 76, is safe in calf to Document who tested by Right Choice earning ACE and a G+ rating. Her sister, Lot 77 is bred up early to Magnifique who has 8 traits in the top 1-4% EPDs and \$ Indexes.

Lot 78 KRJ L312

CE:	15	DOC:	13.1
BW:	-1.4	CW:	27.5
WW:	76	YG:	-.30
YW:	107	Marb:	.22
ADG:	-.19	BF:	-.053
MCE:	9	REA:	.76
Milk:	24	API:	146
MWW:	62	TI:	83
Stay:	17		

ASA#4248136 BD: 2/9/23 Tattoo: L312
Homo Black Homo Polled Purebred SM Cow

OMF EPIC E27 WS ALL-AROUND Z35
OMF TIME LESS B100

KRJ J1118 RBS BOISE B63
KRJ F872

AI Sire (5/2/24): **Tehama Patriarch F028 (ASA#3718806)**
Due: **2/8/25 - Safe to AI Sire**
Pasture Sire (6/1 to 7/1/24): **MLC Mr Direct Deposit K686**

PLAN MATING EST EPD

CE:	BW:	WW:	YW:	ADG:	MCE:	MILK:	MWW:	STAY:
17	-2.7	80	132	.33	11	27	68	15
DOC:	CW:	YG:	MARB:	BF:	REA:	API:	TI:	
12.9	47.0	-.07	.55	.00	.68	154	90	

This moderate, easy fleshing female comes from a strong maternal pedigree. She is due early to the go to calving ease sire, Patriarch, who is admired for his power, data and phenotype!

Lot 79 KRJ L316

CE:	15	DOC:	12.5
BW:	-0.7	CW:	36.6
WW:	80	YG:	-.29
YW:	117	Marb:	.48
ADG:	.23	BF:	-.060
MCE:	8	REA:	.77
Milk:	31	API:	145
MWW:	70	TI:	88
Stay:	15		

ASA#4248140 BD: 2/9/23 Tattoo: L316
Homo Black Homo Polled 3/4 SM 1/4 AN Cow

TJ ARROWHEAD 263G K C F BENNETT HOMESTEAD
TJ 22X

KRJ J176 KRJ SUPREME G901
KRJ E7106

AI Sire (5/2/24): **TJ Klondike 549K (ASA#4065070)**
Due: **2/2/25 - Safe to AI Sire**
Pasture Sire (6/1 to 7/1/24): **MLC Mr Direct Deposit K686**

PLAN MATING EST EPD

CE:	BW:	WW:	YW:	ADG:	MCE:	MILK:	MWW:	STAY:
17	-2.1	81	120	.25	9	33	72	15
DOC:	CW:	YG:	MARB:	BF:	REA:	API:	TI:	
14.3	39.8	-.10	.62	.00	.66	159	92	

This female reigns from the great Latisa cow who was crowned as the National Champion Purebred Cow/Calf Pair in 2018. She's bred to Klondike whose progeny are standouts for their body, eye appeal and feet and leg structure!

Lot 80 DJF L385

CE:	8	DOC:	13.9
BW:	2.6	CW:	51.5
WW:	98	YG:	-.27
YW:	145	Marb:	.36
ADG:	-.29	BF:	-.059
MCE:	3	REA:	.93
Milk:	14	API:	143
MWW:	63	TI:	93
Stay:	15		

ASA#4248207 BD: 2/19/23 Tattoo: L385
Homo Black Homo Polled Purebred SM Cow

LBRS GENESIS G69 WS PROCLAMATION E202
LBR DIANA D69

DJF H099 LLC DR WITNESS 541C
DJF D6118

AI Sire (5/2/24): **HA Magnifique 72L (ASA#4196053)**
Due: **2/8/25 - Safe to AI Sire**
Pasture Sire (6/1 to 7/1/24): **MLC Mr Direct Deposit K686**

PLAN MATING EST EPD

CE:	BW:	WW:	YW:	ADG:	MCE:	MILK:	MWW:	STAY:
15	-1.3	86	128	.27	9	24	67	18
DOC:	CW:	YG:	MARB:	BF:	REA:	API:	TI:	
13.8	41.4	-.20	.80	-.03	.78	182	102	

Genesis has continued to produce offspring with exceptional growth and carcass traits and her dam was a top WW heifer in 2020 with a 109 ratio. She's due to Magnifique, who is unique for his early maturity paired with elite marbling and calving ease genetics.

Lot 81 KRJ L3106

CE:	13	DOC:	12.3
BW:	.4	CW:	34.4
WW:	90	YG:	-.50
YW:	135	Marb:	.08
ADG:	-.29	BF:	-.079
MCE:	6	REA:	1.27
Milk:	17	API:	136
MWW:	62	TI:	86
Stay:	15		

ASA#4248227 BD: 3/4/23 Tattoo: L3106
Homo Black Homo Polled Purebred SM Cow

BCLR CASH FLOW C820 CCR WIDE RANGE 9005A
BCLR MISS MONICA U820

BUUS MISS HONESTY H03 FELT FIREMAN 911C
KGH MISS EPIC 4216B

AI Sire (5/2/24): **Hook's Galileo 210G (ASA#3563620)**
Due: **2/8/25 - Safe to AI Sire**
Pasture Sire (6/1 to 7/1/24): **MLC Mr Direct Deposit K686**

PLAN MATING EST EPD

CE:	BW:	WW:	YW:	ADG:	MCE:	MILK:	MWW:	STAY:
15	-.9	90	138	.30	9	28	73	17
DOC:	CW:	YG:	MARB:	BF:	REA:	API:	TI:	
16.0	42.0	-.33	.65	-.06	.99	175	102	

Her dam has had three calves with a 106 WW ratio with her first bull being a sale topper going to Rasmussen Farms and this year her Lot 31 bull has a 108 WW and 112 YW ratio! With her significant growth and carcass traits, Galileo should complement her well.

Lot 82 KRJ L3192

CE:	13	DOC:	12.7
BW:	.5	CW:	16.6
WW:	74	YG:	-.46
YW:	95	Marb:	-.09
ADG:	-.13	BF:	-.082
MCE:	7	REA:	.89
Milk:	18	API:	104
MWW:	55	TI:	71
Stay:	9		

ASA#4248282 BD: 3/6/23 Tattoo: L3192
Black Homo Polled Purebred SM Cow

W/C BANKROLL 811D W/C LOADED UP 1119Y
MISS WERNING KP 8543U

DOUBLE J MISS U828 SS GOLDMINE L42
DOUBLE J MISS S656

AI Sire (5/2/24): **Tehama Patriarch F028 (ASA#3718806)**
Due: **2/8/25 - Safe to AI Sire**
Pasture Sire (6/1 to 7/1/24): **MLC Mr Direct Deposit K686**

PLAN MATING EST EPD

CE:	BW:	WW:	YW:	ADG:	MCE:	MILK:	MWW:	STAY:
15	-1.8	79	126	.30	10	24	65	11
DOC:	CW:	YG:	MARB:	BF:	REA:	API:	TI:	
12.7	41.6	-.15	.39	-.02	.75	134	84	

Combination of two great pedigrees consisting of Bankroll and our U828 donor that went on to produce the X011 donor who sold to Kenner Simmentals and is known for being one of the ASA's most prolific donor cows.



KIPP JULSON
48672 252nd Street
Garretson, SD 57030



**TIME DATED MATERIAL!
PLEASE DO NOT DELAY!**



DOUBLE J FARMS

51st Annual Bull & Female Sale

FRIDAY, JANUARY 24, 2025

JOIN US AT 12:00 NOON • SELLING 82 SIMMENTAL, SIMANGUS & ANGUS LOTS!